

Stephanie Rawlings-Blake
Mayor



Room 250
City Hall
Baltimore, MD 21202

May 20, 2016

TO: The Honorable Stephanie Rawlings-Blake, Mayor
Kaliopé Parthemos, Chief of Staff
Khalil Zaied, Deputy Mayor of Operations
Sameer Sidh, Director of CitiStat

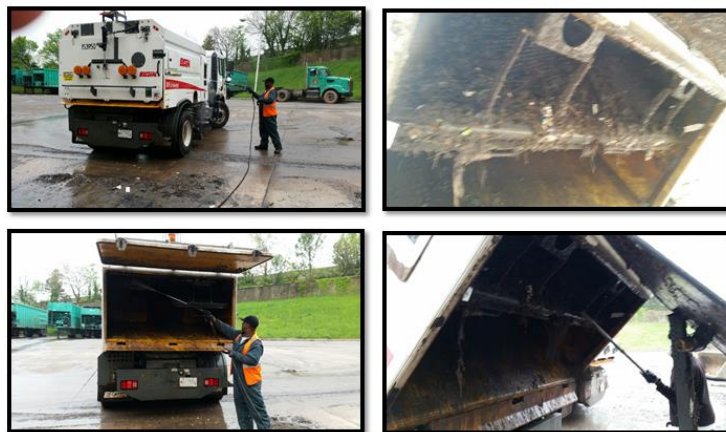
FROM: CitiStat Team

SUBJECT: DPW- Bureau of Solid Waste, Executive Briefing



- **Making Progress**

- **Street Sweeper Maintenance.** The Bureau of Solid Waste has begun pressure washing street sweepers at the end of daily shifts in order to reduce maintenance costs and increase sweeper availability. The adjustment comes in response to the 60 percent average availability rate recorded during the March 19 to April 1 period that was discussed at the April 22 CleanStat meeting. Pictured below is a Department of Public Works employee pressure washing a street sweeper.



- The Bureau of Solid Waste stated at the previous CitiStat meeting that they had made a conscious decision to send a large number of vehicles for repairs, and this decision was a contributing factor to low sweeper availability rates. During the April 16 through April 29 period, the sweeper availability rate improved to an 88 percent average, due in part to sweepers previously in for repairs being returned to active service. The number of Street Sweepers in the garage decreased from 20 to 12. Pictured below is sweeper availability data from the Period 9 (April 16 – 29).

VEHICLE TYPE		TOTAL FLEET	SAT 16-Apr	SUN 17-Apr	MON 18-Apr	TUE 19-Apr	WED 20-Apr	THU 21-Apr	FRI 22-Apr	SAT 23-Apr	SUN 24-Apr	MON 25-Apr	TUE 26-Apr	WED 27-Apr	THU 28-Apr	FRI 29-Apr	AVERAGE
Routine Services Mechanical Street Sweepers	37	Required			24	24	25	26	25			24	24	25	26	25	25
		Available			19	19	17	21	22			22	23	27	26	25	22
		Garage			18	18	20	16	15			15	14	10	11	12	15
		Yard			0	0	0	0	0			0	0	0	0	0	0
		Total				37	37	37	37	37			37	37	37	37	37
		Percentage			79%	79%	68%	81%	88%			92%	96%	108%	100%	100%	1

Needs Improvement

- Baltimore City School Recycling.** The Bureau of Solid Waste schedules recycling pickup for 196 schools in the Baltimore City Public School System. The Bureau tracks the number of unsuccessful pickups for each school in order to determine the percentage for successful pickups by school. The Bureau also creates a report card that break down the successful percentages as A (90-100%), B (80-89%), C (70-79%), D (60-69%) and F (<59%). As of May 6, 2016, 90 of the 195 (46%) were recording an “F” successful pickup percentage. 9 schools on the list have never had a successful recycling pick up, which is less than the 24 from the previous CitiStat meeting. In order to increase the City’s recycling percentage to 35%, it is important to receive more participation from the school system. In addition, the school system provides a great opportunity to educate students from a young age about the positive impacts of recycling. The screen shot below is from the School Recycling template, and shows the schools that have a less than 10% successful pickup percentage.

Baltimore City Public Schools Recycling Information SY2015-16 as of: May 6, 2016				Successful pickup rate		
				#	%	
				A (90-100%)	37	19%
				B (80-89%)	30	15%
				C (70-79%)	19	10%
				D (60-69%)	19	10%
				F (<59%)	90	46%
				195	100%	

school	schoolname	Pickup D	Contact	Attempted Picku	Successful Picku	Unsuccessful Picku	% successf
375	Baltimore Collegiate School for Boys	Tuesday		29	0	29	0%
367	Baltimore Community High School	Friday		29	2	27	7%
1001	BCPS Stadium	Tuesday		30	2	28	7%
130	Booker T. Washington Middle	Thursday		30	0	30	0%
160	Dr. Carter Godwin Woodson Elem/Middle	Thursday		30	0	30	0%
11	Eutaw-Marshburn Elementary	Thursday		30	0	30	0%
10	James McHenry Elementary	Thursday		30	0	30	0%
144	James Mosher Elementary	Thursday		30	2	28	7%
347	KIPP Harmony	Wednesday		31	0	31	0%
381	Monarch Academy Public Charter School	Tuesday		30	0	30	0%
422	New Era Academy High	Thursday		30	1	29	3%
97	Collington Square Elem/Middle	Friday		29	2	27	7%
98	Samuel F. B. Morse Elementary	Thursday		30	1	29	3%
159	Cherry Hill Elementary/Middle	Thursday		30	2	28	7%
62	Edgecombe Circle Elem/Middle	Wednesday		31	2	29	6%
450	Frederick Douglass High	Wednesday		31	2	29	6%
4	Steuart Hill Academic Academy	Thursday		30	2	28	7%
229	Holabird Elem/Middle	Friday		29	0	29	0%
323	The Crossroads School Elem/Middle	Friday		29	0	29	0%